

Hampshire Water Transfer and Water Recycling Project

Environmental Statement - Appendix 19.2 Figure 6 Pipelines between the Water Recycling Plant site and Bedhampton Springs against water body boundaries

VOLUME NUMBER: 6

PLANNING INSPECTORATE SCHEME NUMBER: WA010002

APPLICATION DOCUMENT REFERENCE: 6.3

APFP REGULATION: 5(2)(a)

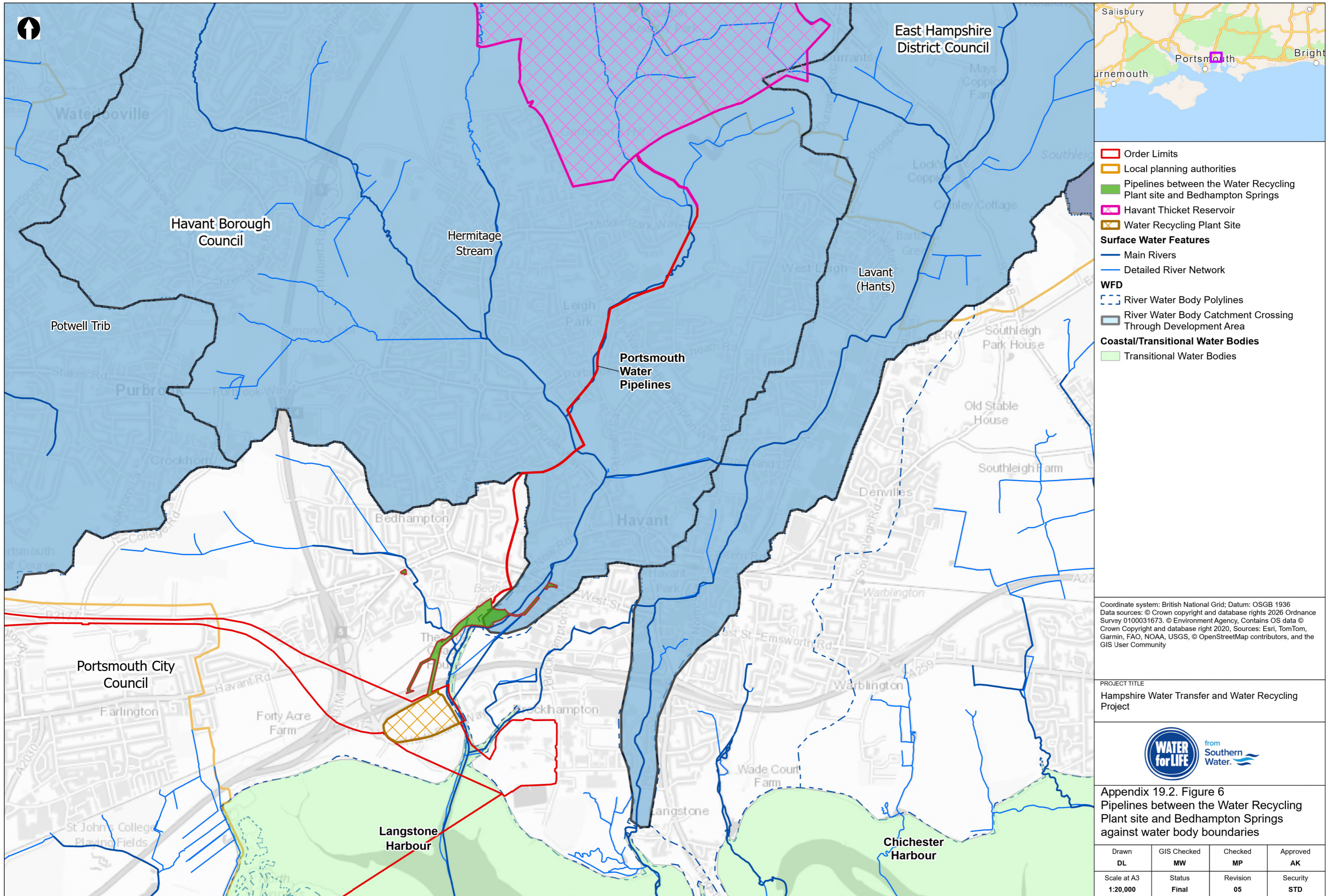
May 2026

Version 0



from
**Southern
Water** 

The Southern Water logo consists of the words 'Southern' and 'Water' stacked vertically in a blue, sans-serif font. To the right of the text is a graphic of three stylized, wavy blue lines representing water.



- Order Limits
- Local planning authorities
- Pipelines between the Water Recycling Plant site and Bedhampton Springs
- Havant Thicket Reservoir
- Water Recycling Plant Site
- Surface Water Features**
- Main Rivers
- Detailed River Network
- WFD**
- River Water Body Polylines
- River Water Body Catchment Crossing Through Development Area
- Coastal/Transitional Water Bodies**
- Transitional Water Bodies

Coordinate system: British National Grid; Datum: OSGB 1936
 Data sources: © Crown copyright and database rights 2026 Ordnance Survey 0100031673. © Environment Agency, Contains OS data © Crown Copyright and database right 2020, Sources: Esri, TomTom, Garmin, FAO, NOAA, USGS, © OpenStreetMap contributors, and the GIS User Community

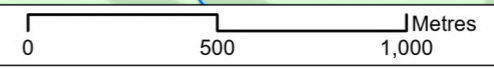
PROJECT TITLE
 Hampshire Water Transfer and Water Recycling Project



Appendix 19.2. Figure 6
 Pipelines between the Water Recycling Plant site and Bedhampton Springs against water body boundaries

Drawn DL	GIS Checked MW	Checked MP	Approved AK
Scale at A3 1:20,000	Status Final	Revision 05	Security STD

© Southern Water 2026
 This document is issued for the party which commissioned it and for specific purposes connected with the captioned project only. It should not be relied upon by any other party or used for any other purpose. We accept no responsibility for the consequences of this document being relied upon by any other party, or being used for any other purpose, or containing any error or omission which is due to an error or omission in data supplied to us by other parties.



Drawing Number
PC5223-RHD-ES-ZZ-D-Z-0101